

# WifiHandwritePad User Manual

## Version 1.1



This User Manual shows you how to use WifiHandwritePadServer (PC software) , WifiHandwriteFree and WifiHandwritePro (Android™ Apps).

### Documents:

1. For information on PC Software installation, refer to “[PC Installation Guide](#)”.
2. For information on WifiHandwriteFree (or WifiHandwritePro) Apps installation on Android™ mobile phone, refer to <http://market.android.com>.
3. For information on “How To Connect PC and Mobile”, refer to “[Connection Guide](#)”.
4. For information on “How To Use WifiHandwritePad”, refer to this manual.

### Contact information:

- URL: <http://wifihandwritepad.blogspot.com>
- Contact: [teamprof.net@gmail.com](mailto:teamprof.net@gmail.com)

# WifiHandwritePadServer (PC Software):

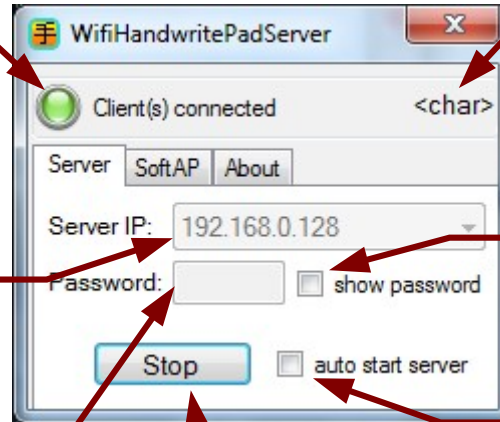
There are 3 tabs on WifiHandwritePadServer program

The “Server” tab shows the IP address and settings for the server.

Connection status:  
Green: server-client connection success.  
Yellow: server is waiting for client.  
Red: server is stopped.

Current IP address of the server. You can select from the listbox if there are more than 1 IP addresses

Password of the server. Mobile has to input correct password to connect.  
(Only WifiHandwritePadPro version supports “password” function)



Normally, the received character from mobile is shown here.  
When there is error, the error string is shown.  
<password err>: wrong password from mobile  
<eval expired>: free evaluation is expired, purchase “Pro” version

Show the password in normal characters or in “\*\*\*\*\*”.  
(Only WifiHandwritePadPro version supports “password” function)

If it is “checked”, server starts automatically when program runs.  
If it is “unchecked”, server starts by clicking the “Start/Stop” button.

Start or Stop server button.

The "SoftAP" tab shows Software Access Point settings (for advanced users)



SSID name of the SoftAP

Key for the Software Access Point  
User MUST input 8-12 characters.

Show the key in normal characters or in "\*\*\*\*\*".

If it is "checked", stop SoftAP when program exits.

Start or Stop Software Access Point button.

The "About" tab shows program information



Name and version of the server program.

WifiHandwritePad web site

# WifiHandwriteFree and WifiHandwritePro (Android™ mobile phone Apps)

There are two tabs on Apps.

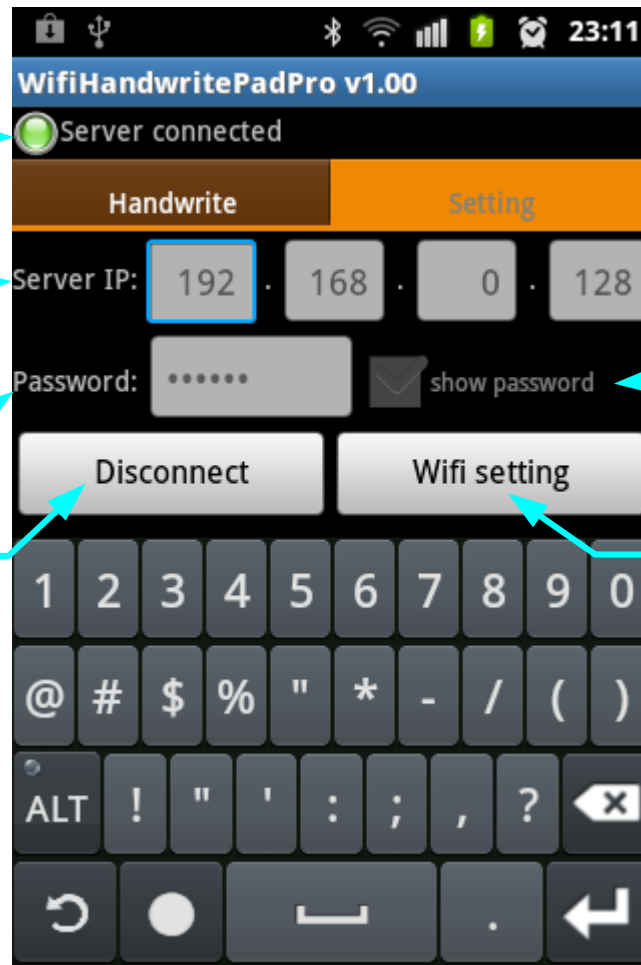
The “Setting” tab shows connection settings.

Connection status:  
Green: server-client connection success.  
Yellow: server disconnected  
Red: client error (e.g. Wifi is off)

Input server IP address.

Input server password to connect.  
(Only WifiHandwritePadPro version supports “password” function)

Connect or Disconnect server.



Show the password in normal characters or in “\*\*\*\*\*”.  
(Only WifiHandwritePadPro version supports “password” function)

Go go Setting for Wifi (e.g. Turn on Wifi).

The “Handwrite” tab is the handwriting pad for input Chinese characters.



Input character here