

BtHandwritePad PC Server Installation guide version 1.3



This Installation Guide shows you how to install BtHandwritePadServer C# version on Windows® 7 PC, as well as Java™ version on Windows® 7, Vista, 2000, XP

System requirements:

- Operation system:
 - Windows® 7 Home Premium or above for C# version, OR
 - Windows® 7, Vista, 2000, XP or above for Java™ version, OR
 - Linux Ubuntu 12.04, Fedora 17 or above for Java™ version
- Bluetooth enabled PC
- C#: .Net Framework 4 (refer to <http://msdn.microsoft.com/en-us/library/8z6watww.aspx> for more information)
- Java: Java SE Runtime Environment 7
<http://www.oracle.com/technetwork/java/javase/downloads/jre7-downloads-1637588.html>

Documents:

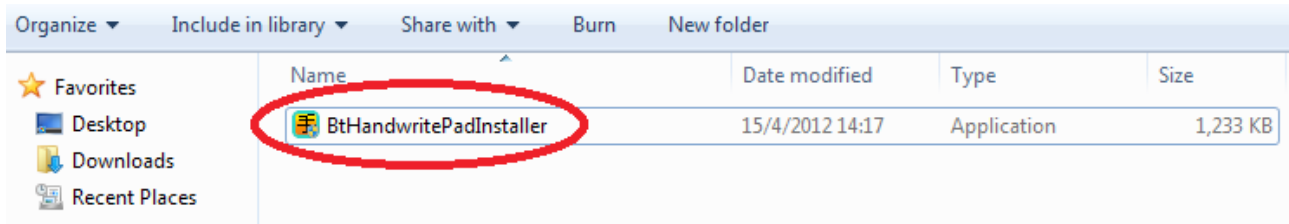
1. For information on PC Server Software installation, refer to this manual
2. For information on BtHandwritePadFree (or BtHandwritePadPro) APP installation on Android™ mobile phone, refer to <http://www.samsungapps.com>
3. For information on “How To Pair Bluetooth devices between Android™ phone and PC”, refer to “[PairBluetoothDevice](#)”.
4. For information on “How To Use BtHandwritePad”, refer to “[BtHandwritePadUserManual](#)”.

Contact information:

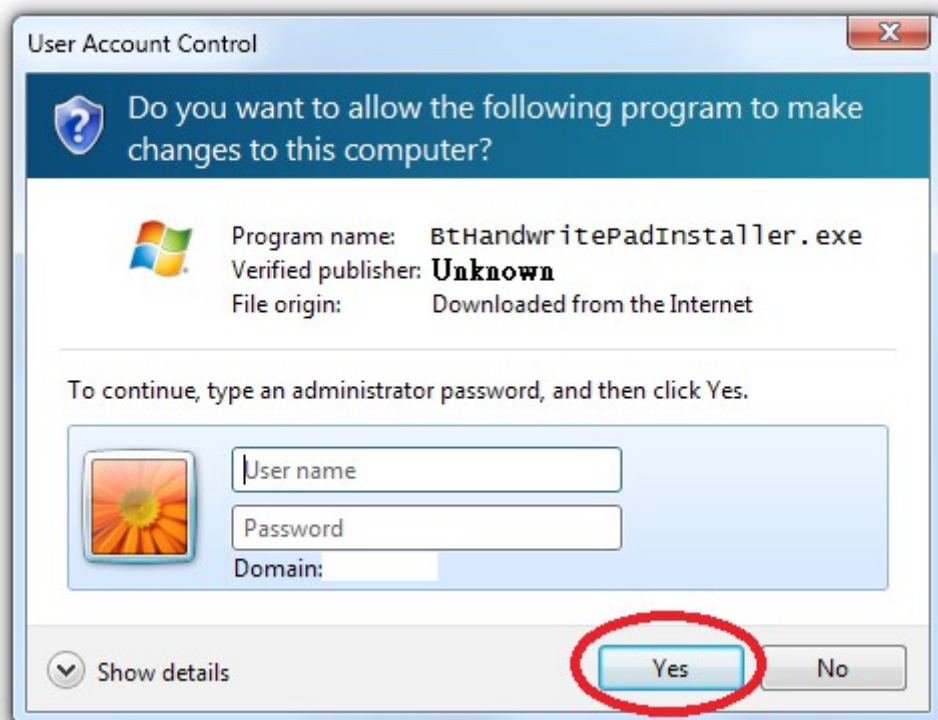
- URL: <http://teamprof.coffeecup.com/>
- Contact: teamprof.net@gmail.com

C# version

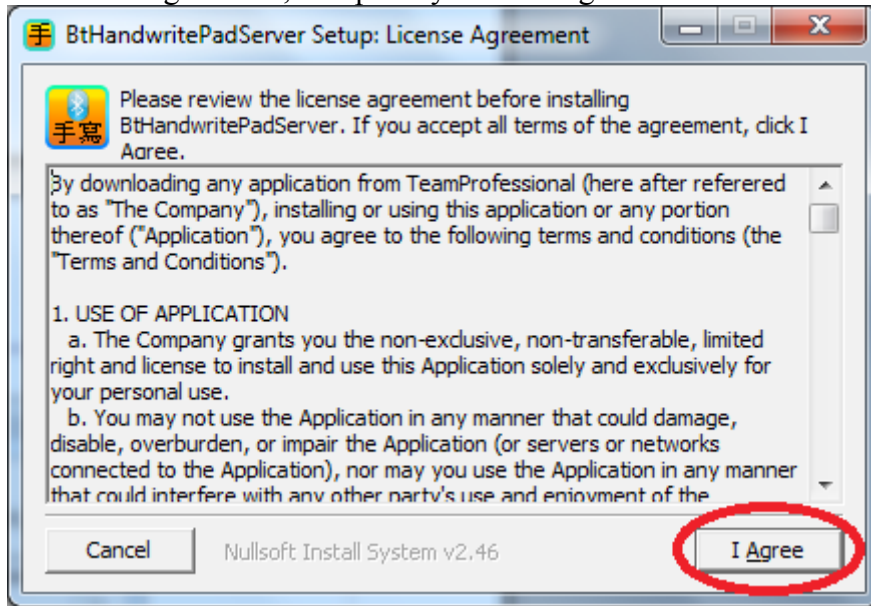
1. Download [BtHandwritePadInstaller.zip](#)
Extract to BtHandwritePadInstaller.exe
Double click “BtHandwritePadInstaller.exe”



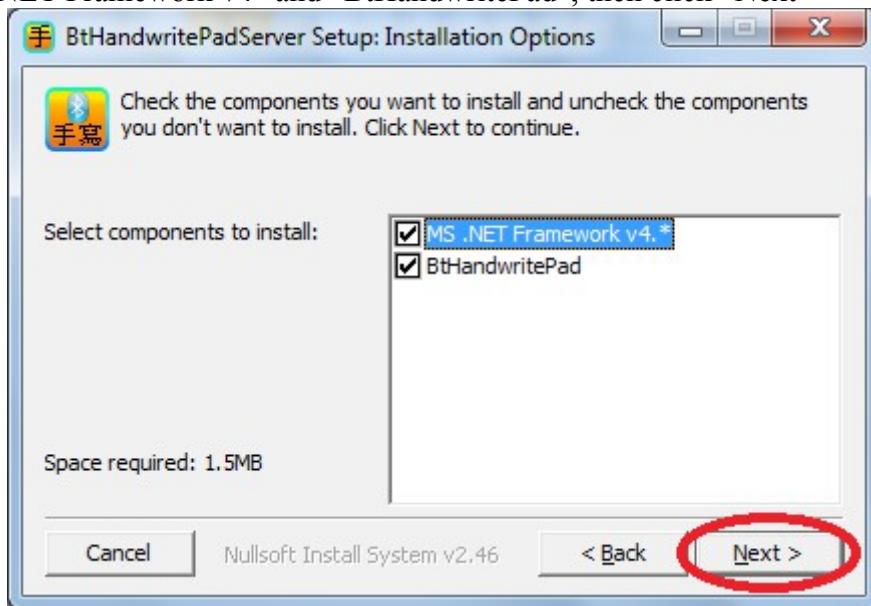
2. An “User Account Control” dialog is shown.
Input “Administrator” password and then click “Yes”



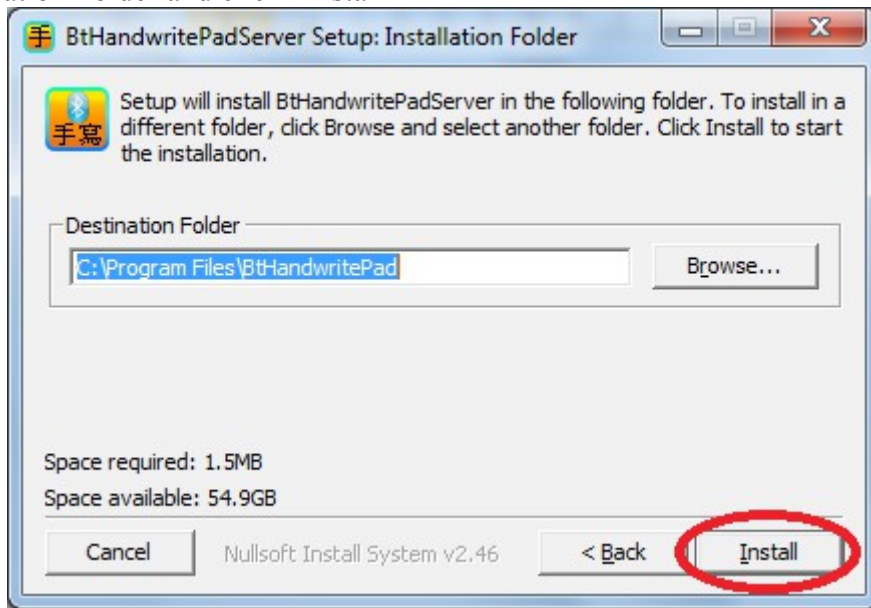
3. Read End User License Agreement, accept it by click “I Agree”



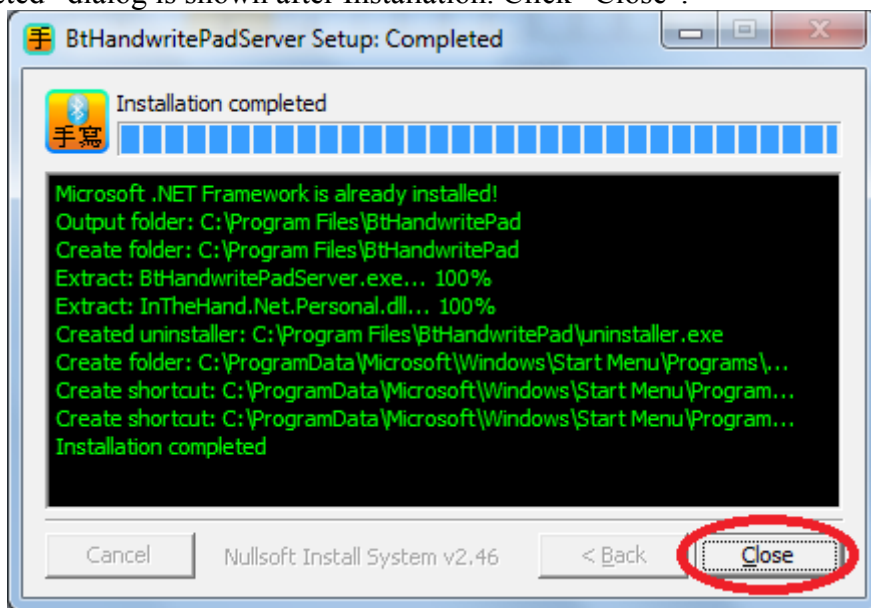
4. Select “MS .NET Framework v4” and “BtHandwritePad”, then click “Next”



5. Select Destination Folder and click “Install”



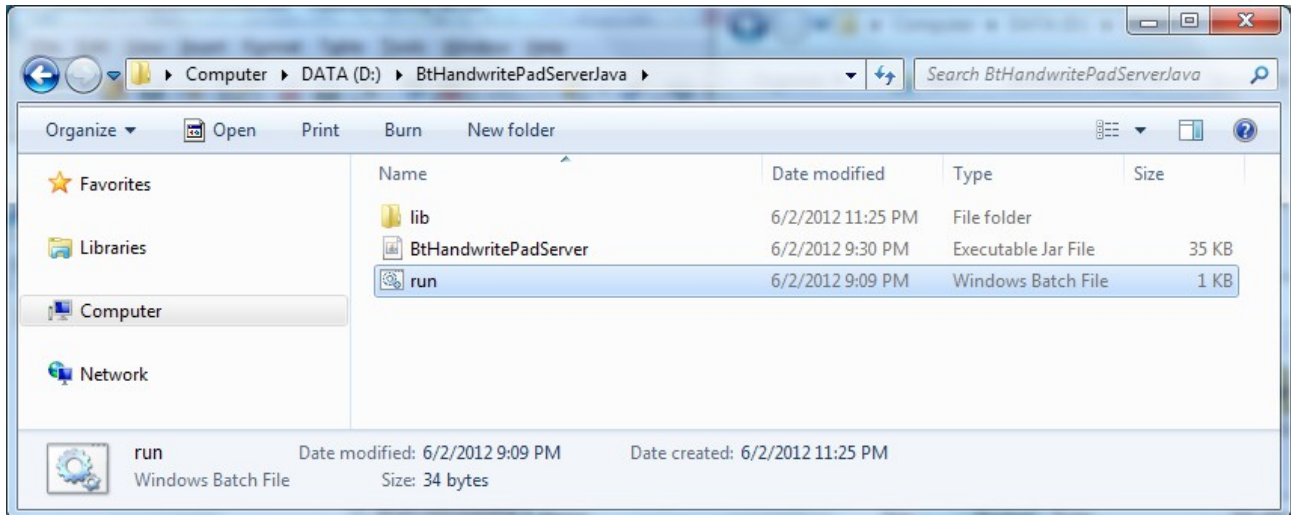
6. The “Completed” dialog is shown after Installation. Click “Close”.



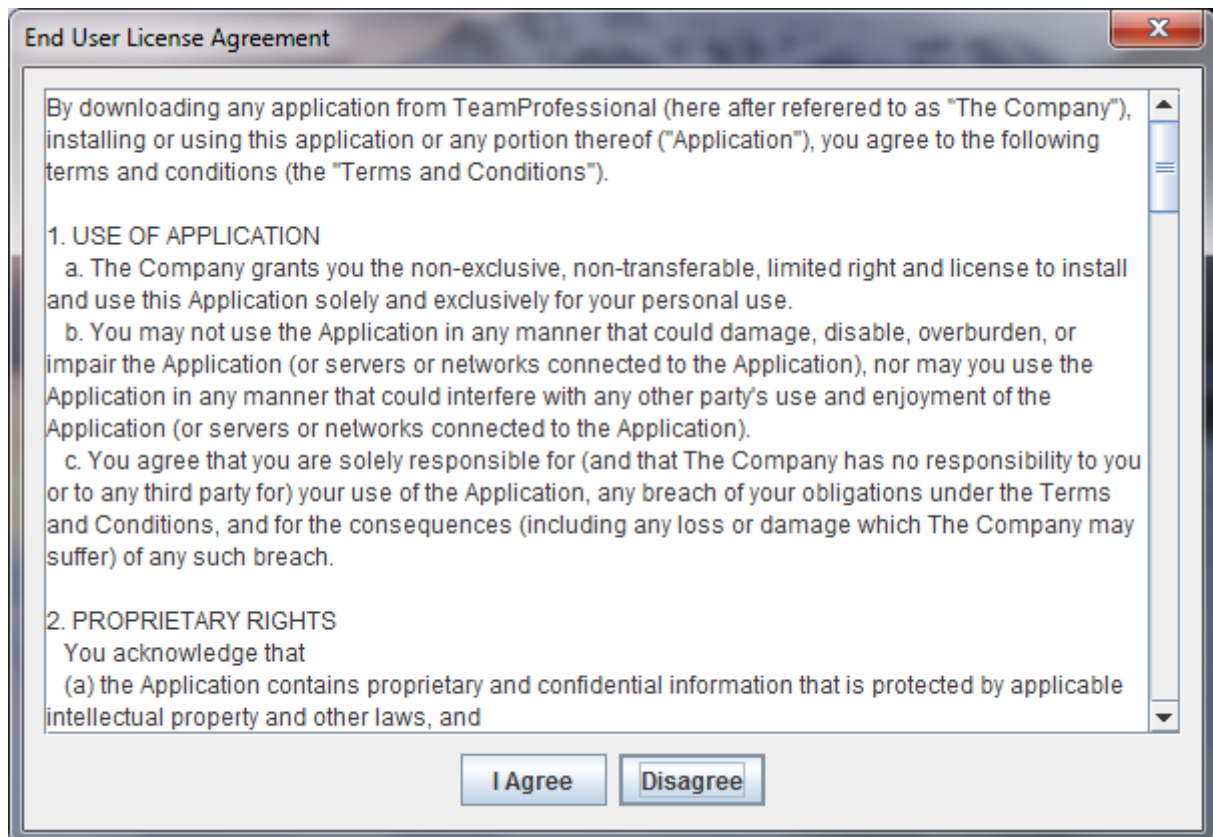
8. Read “[PairBluetoothDevice](#)” and “[BtHandwritePadUserManual](#)” for connecting to Android™, Enjoy BtHandwritePad.

Java™ version

1. Download and Install Java™ SE Runtime Environment version 7
<http://www.oracle.com/technetwork/java/javase/downloads/jre7-downloads-1637588.html>
2. Download [BtHandwritePadServerJava.zip](#)
Extract to folder “BtHandwritePadServerJava”
Double click “run.bat” or “BtHandwritePadServer.jar”



3. For the first time user, please read End User License Agreement and click “I Agree”
(Click “Disagree if you are not agree. The program will close automatically)



4. Read “[PairBluetoothDevice](#)” and “[BtHandwritePadUserManual](#)” for connecting to Android™, Enjoy BtHandwritePad.

Note:

Java™ is a trademark of Oracle (<http://www.oracle.com>)

Windows® is a trademark of Microsoft (<http://www.microsoft.com>)

Android™ is a trademark of Google Inc (<http://www.google.com>)