

# BtHandwritePad PairBluetoothDevice guide version 1.2



This PairBluetoothDevice guide shows you how to pair Bluetooth devices between Android™ phone and Windows® 7 PC.

## System requirements:

- Operation system:
  - Windows® 7 Home Premium or above for C# version, OR
  - Windows® 7, Vista, 2000, XP or above for Java™ version, OR
  - Linux Ubuntu 12.04, Fedora 17 or above for Java™ version
- Bluetooth enabled PC
- .Net Framework 4 (refer to <http://msdn.microsoft.com/en-us/library/8z6watww.aspx> for more information)
- Java: Java SE Runtime Environment 7  
<http://www.oracle.com/technetwork/java/javase/downloads/jre7-downloads-1637588.html>

## Documents:

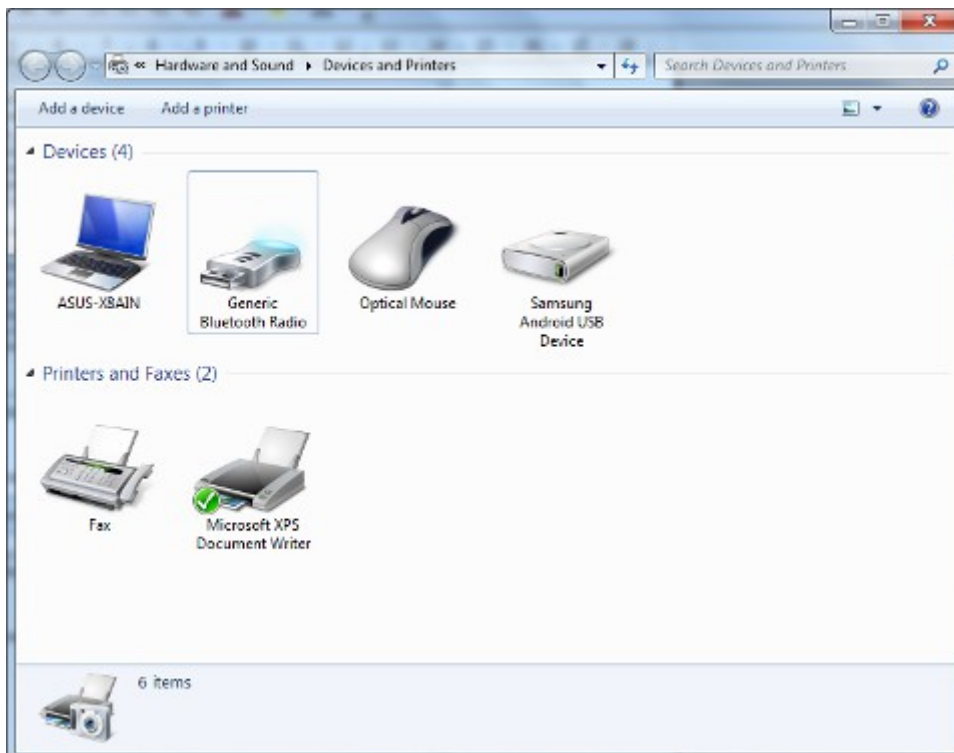
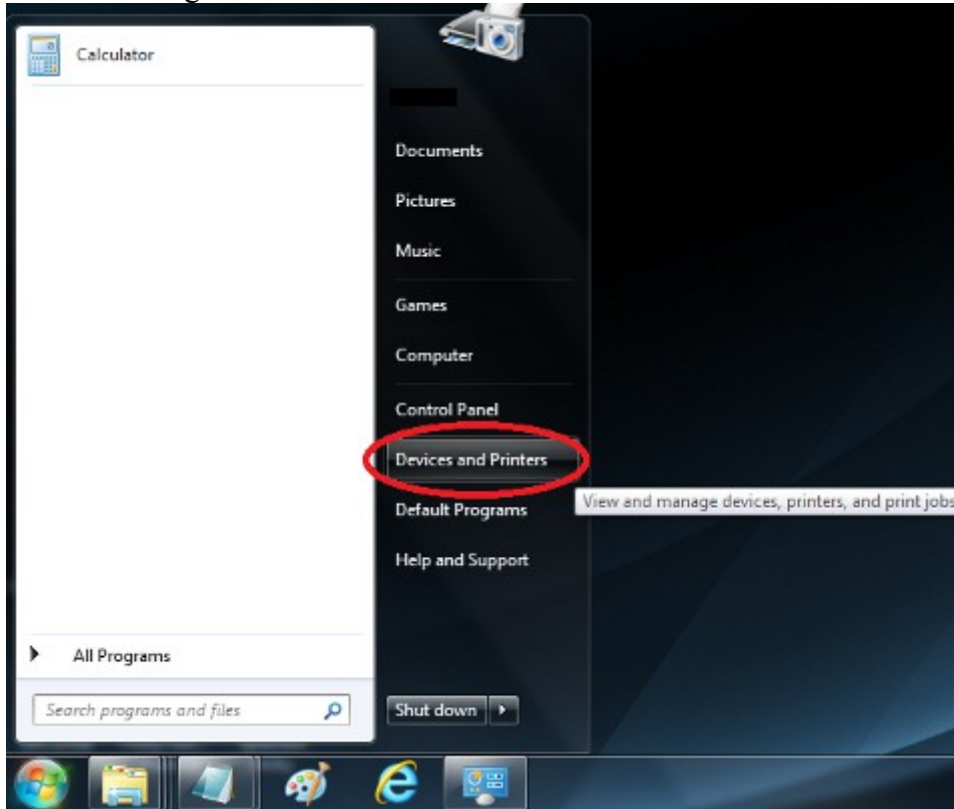
1. For information on PC Server Software installation, refer to “[BtServerInstallationGuide](#)”
2. For information on BtHandwritePadFree (or BtHandwritePadPro) APP installation on Android™ mobile phone, refer to <http://www.samsungapps.com>
3. For information on “How To Pair Bluetooth devices between Android™ phone and PC”, refer to this manual.
4. For information on “How To Use BtHandwritePad”, refer to “[BtHandwritePadUserManual](#)”.

## Contact information:

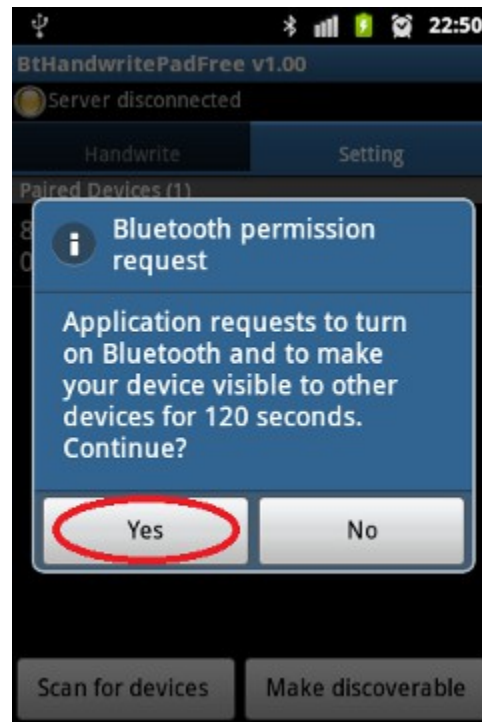
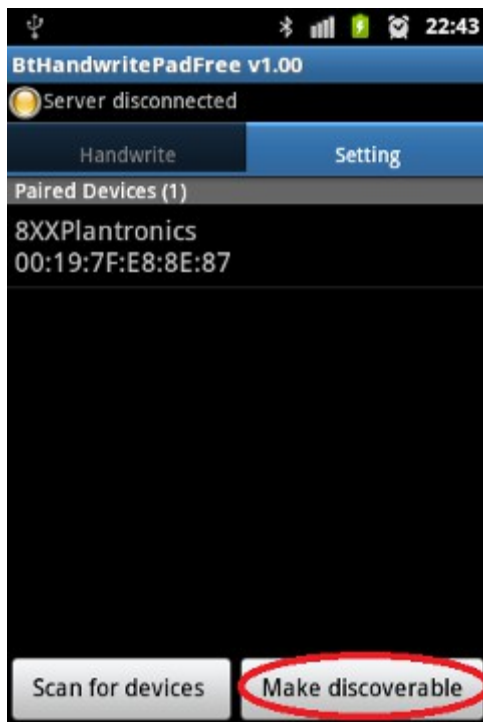
- URL: <http://teamprof.coffeecup.com/>
- Contact: [teamprof.net@gmail.com](mailto:teamprof.net@gmail.com)

## Pair Bluetooth Devices on Windows® 7

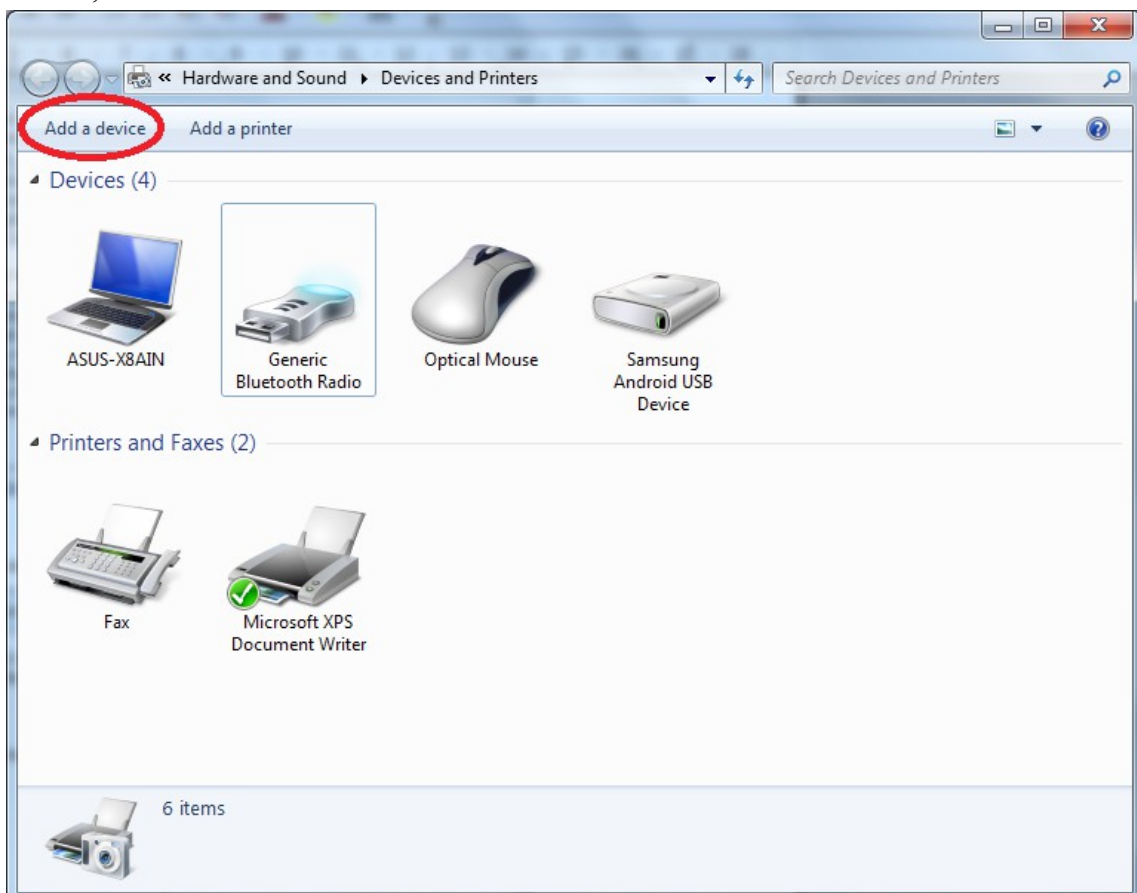
1. **Close all Bluetooth application(s) (e.g. BtHandwritePadServer) on PC.**
2. On Windows® 7 PC, turn-on Bluetooth (refer to your PC manual on how to turn-on Bluetooth).
3. To start pairing, click “Start” menu:  
“Start” → “All Programs” → “Devices and Printers”



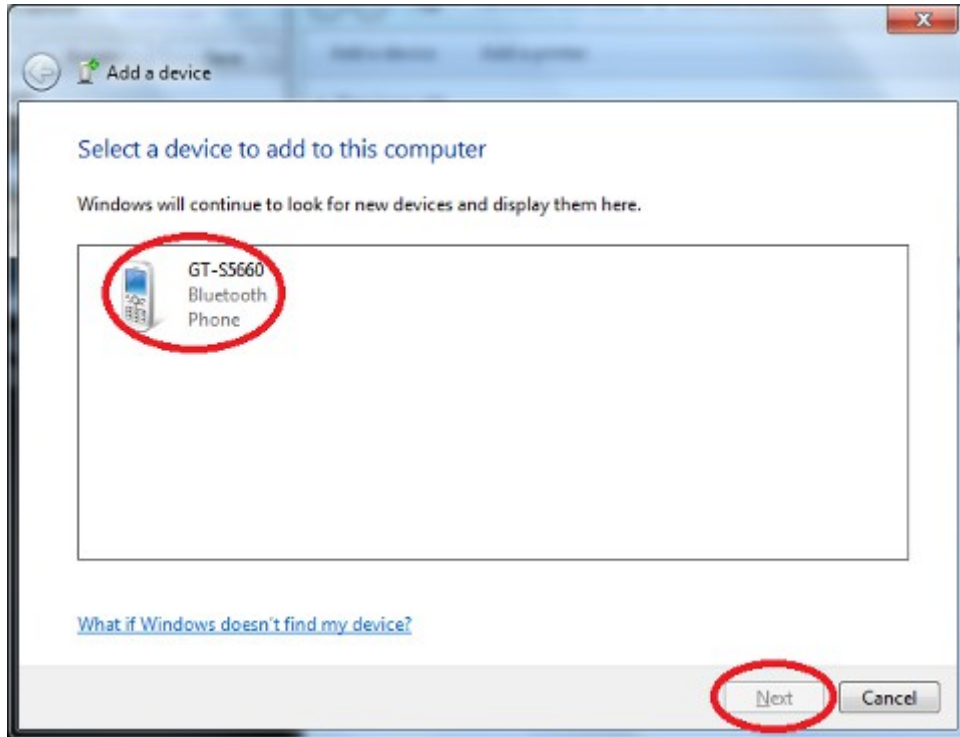
3. On Android™ phone, turn-on Bluetooth, Run BtHandwritePadFree (or BtHandwritePadPro) APP. Click “Make discoverable” and then “Yes”



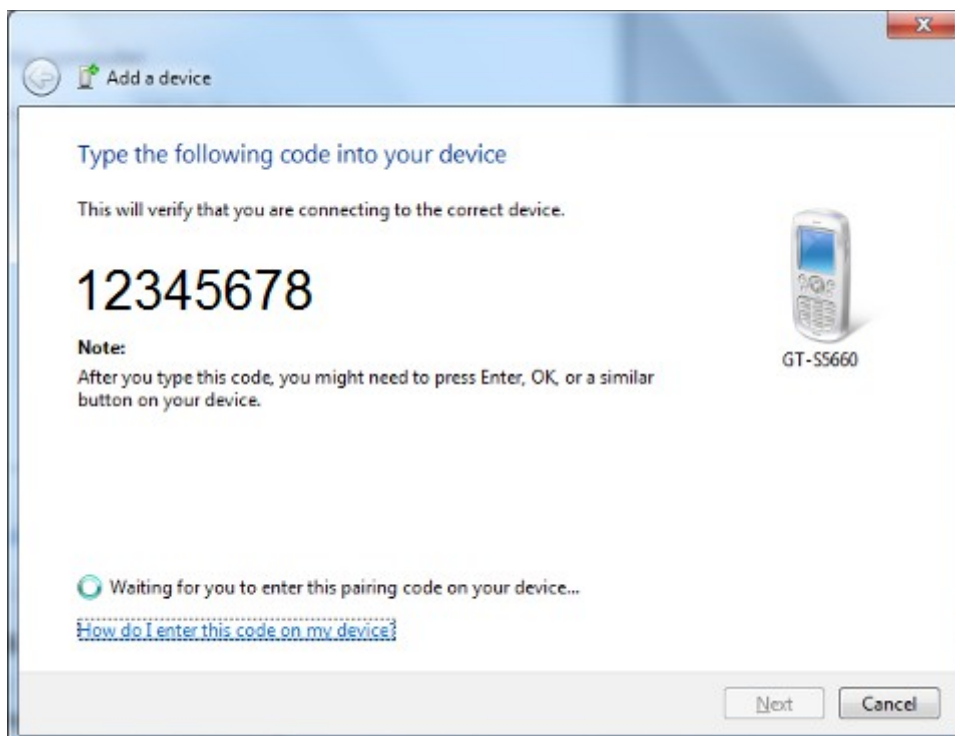
4. On PC, Click “Add a device”



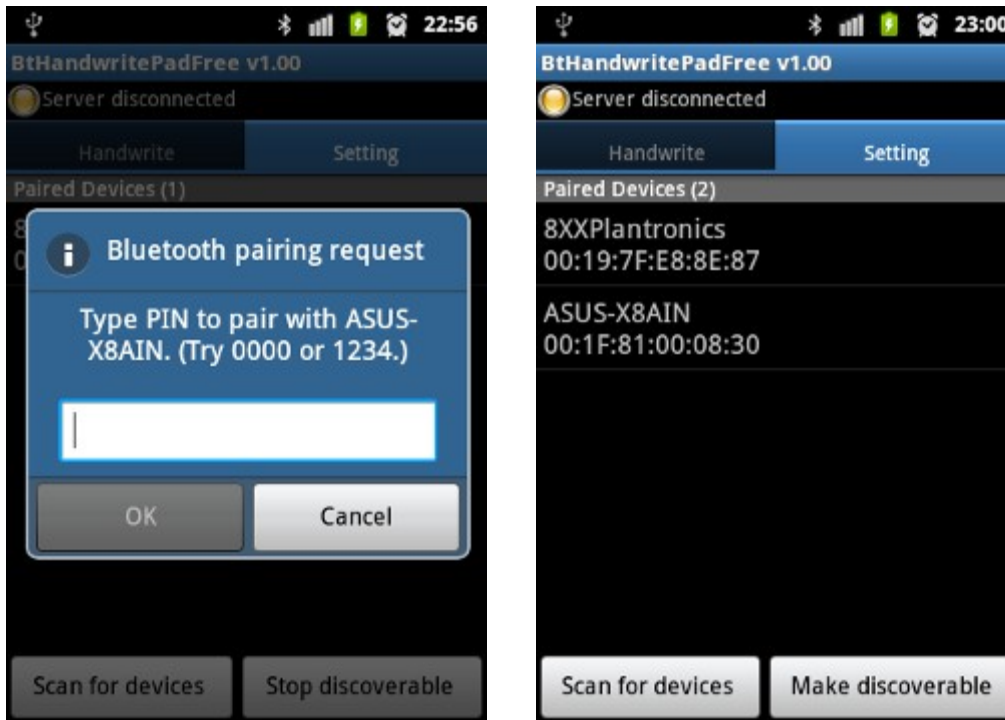
5. Found device is shown on PC, select the bluetooth phone (e.g. GT-S5660) and click “Next”



6. A PIN is shown on PC.



7. Enter the PIN into dialog box on the phone, PC's name will be added to "Paired Devices" if successful.



8. A confirmation is shown on PC, click "Close"



9. **Notice that PC may takes several minutes to install driver(s). Please wait for a while. Pairing is done for one time only.**

10. Bluetooth paring between the phone and PC is completed. Read "[BtHandwritePadUserManual](#)" for using BtHandwritePad , Enjoy BtHandwritePad.

## **Pair Bluetooth Devices on Ubuntu 12.04**

1. Refer to Ubuntu doc for more information on bluetooth setup.  
<https://help.ubuntu.com/community/BluetoothSetup>